

## 1. View the routing topology of your multi-protocol, multi-domain network

Route Explorer monitors and displays the most complex multi-protocol, multi-AS routing networks. Whether you have a single level IS-IS network with hundreds of routers, multi-area OSPF network with many areas, or a global multi-AS network with EIGRP, OSPF, and BGP, Route Explorer can display it in a unified topology map. The various IGP areas and ASes can be displayed hierarchically and in different windows for clarity.

In environments where a number of completely separate networks are maintained and serviced by a single entity – say in a managed service provider or outsourced IT service provider – Route Explorer can monitor and display separate networks in separate topology databases, allowing the monitoring of all the networks while maintaining the separation of the data.

Seeing the complete picture of a complex multi-domain routing topology has not been possible with traditional network management tools. Their device-oriented layer 2 views show too much detail, while their layer 3 views not enough – for example, views of multiple routing domains across geographical areas and private AS boundaries are not shown. Route Explorer is the first multi-domain routing tool that allows you to monitor your global enterprise network with diverse IGPs connected together by BGP.

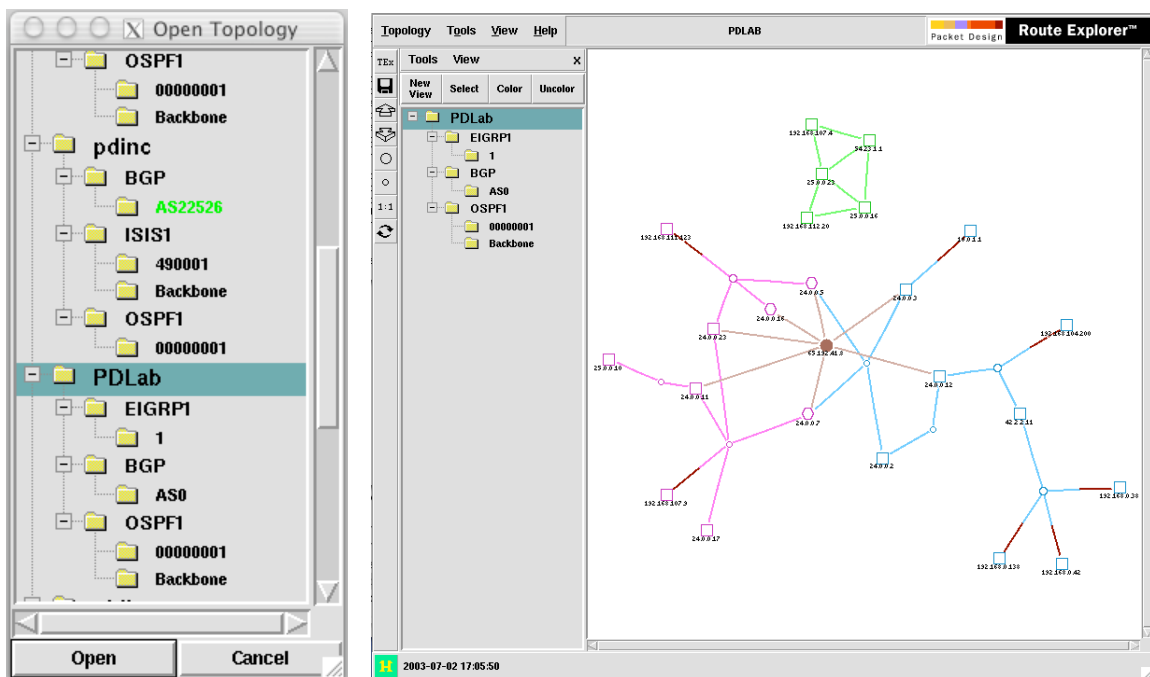


Figure 1

Figure 1 at the left shows what Route Explorer shows you when you open a network topology for viewing. Tree-structured hierarchical display of databases is shown with sub-trees corresponding to networks with diverse IGPs. Figure 1 at right shows a multi-domain topology, once opened.

## HOW TO:

1. Open an X Windows or VNC session to the Route Explorer. See Route Explorer User Guide.
2. Click on File->Open Topology
3. Select the topology domain "DemoEnterpriseAMar03" from menu.
4. Click Open.