

9. Show the exit routers for any Internet destination from your network

In a large network with multiple exits routers to the Internet, it is often useful to see which exits are being taken from various points in your network. This information may help you infer the flow of traffic to your service providers or peers, assisting you in balancing those flows to achieve optimum performance or minimize monthly cost in transit fees and bandwidth costs.

Route Explorer can show you the exit routers from all routers in your network or from a single router. Figure 17 illustrates the first case. Having specified the destination prefix or Internet domain name of your destination (which may be a vendor's support site -- support.cisco.com, an out-sourced application service provider – Salesforce.com, or a web search site – google.com), Route Explorer calculates the IGP path from each router to its nearest exit router calculated from BGP. Each router is then color-coded by exit router and exit routers are highlighted in flashing yellow.

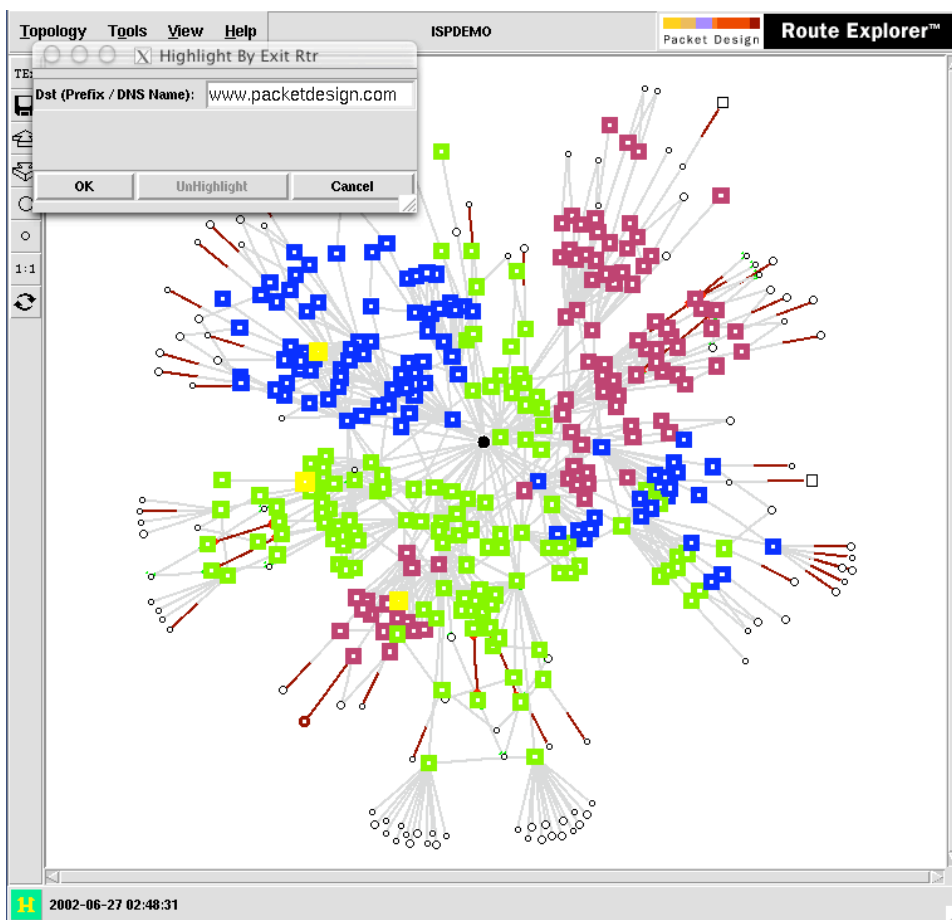


Figure 17

Route Explorer can also show a route from a specific router in your network to an Internet destination. Figure 18 illustrates this case.

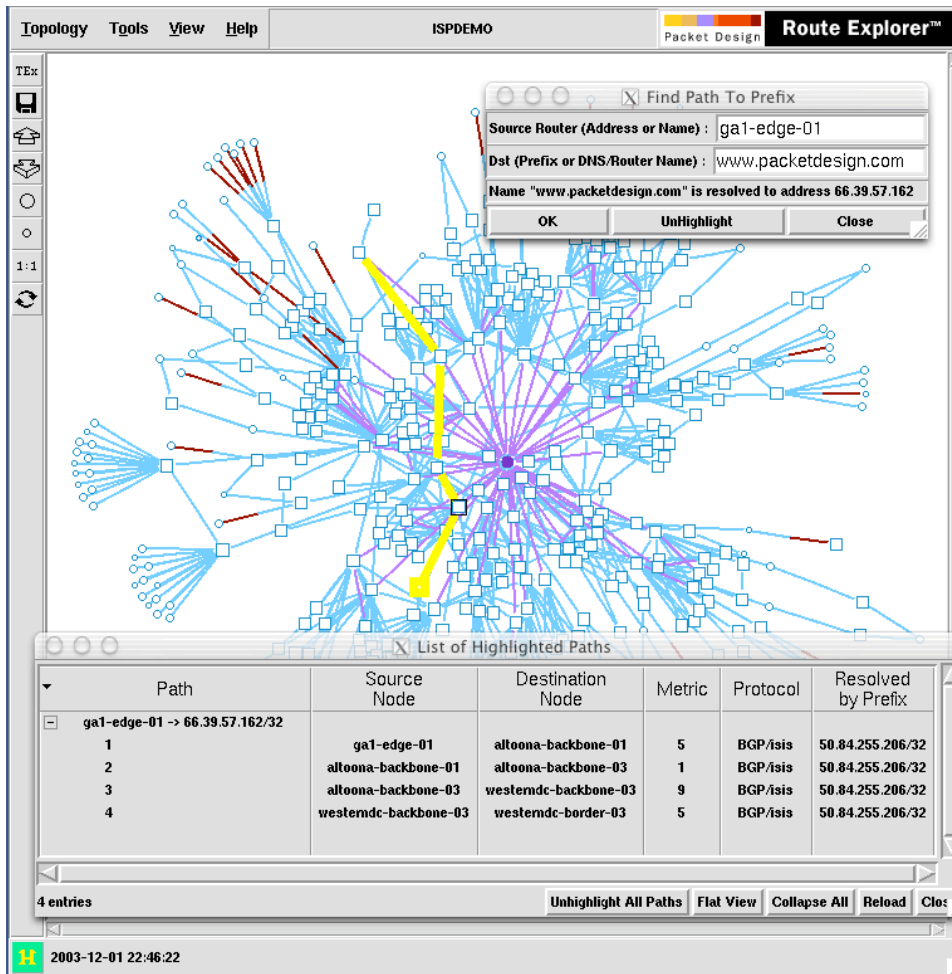


Figure 18

Note that Route Explorer shows a detailed listing of the route, showing each hop and how it was resolved. ECMP routes, if they exist, can be shown optionally. Clicking on each route or next hop in the listing highlights the route or segment in the topology map.

HOW TO:

Show Exit Routers:

1. Open the "DemoTier1ISPJun02" topology.
2. Select Tools->Highlight By Exit Rtr...
3. Enter desired Internet prefix or domain name (e.g. "www.packetdesign.com") and click "OK"

Show an exit route from a router:

1. Select Tools->Find Prefix Path...
2. Enter source router's IP address or router name (ISIS)
3. Enter desired Internet prefix or domain name (e.g. "www.packetdesign.com")
4. Click "OK"
5. Show list of highlighted paths: Select Tools->List Highlighted Paths